

Pump Performance Curve

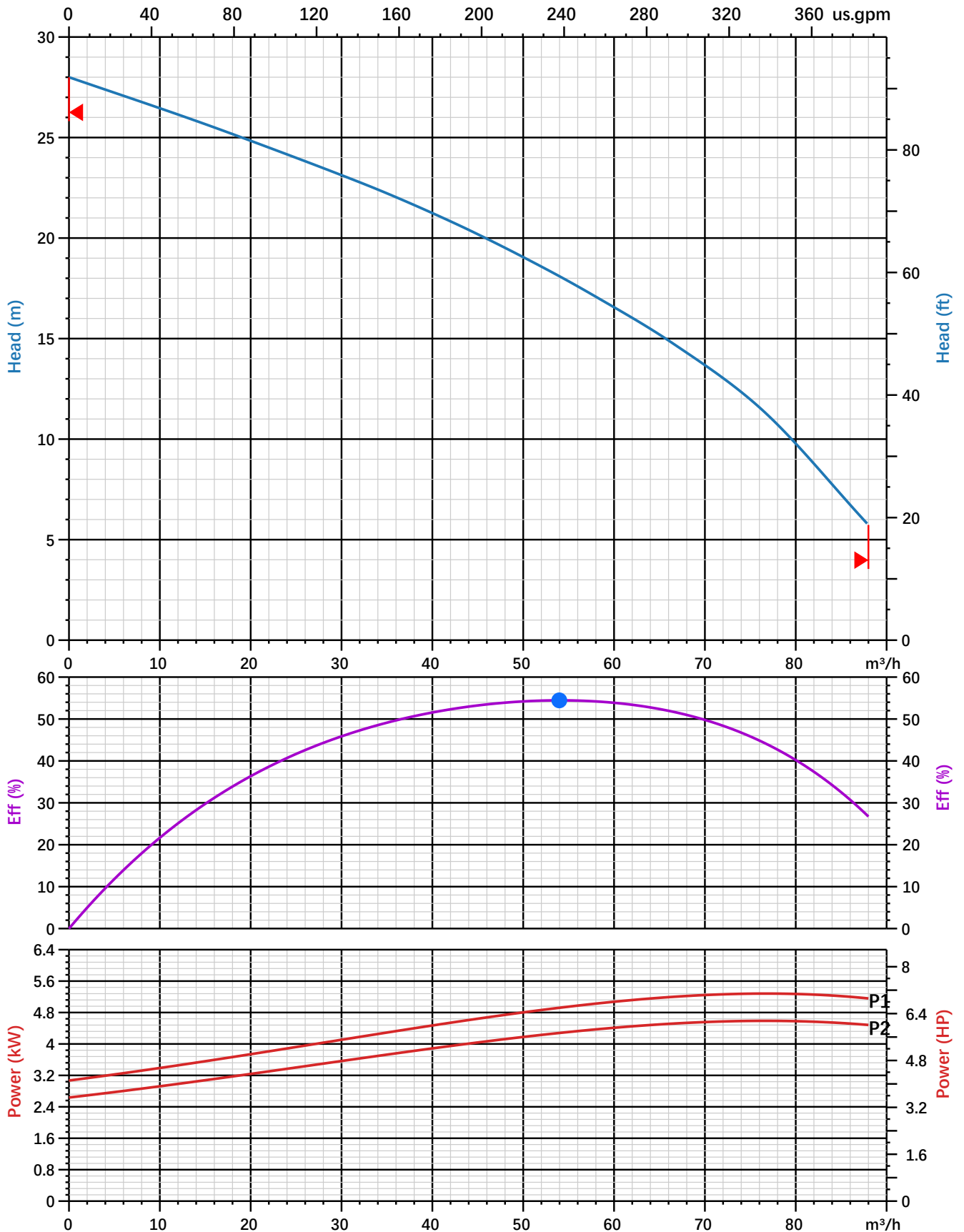
Pump name: HIGH TEMPERATURE LIQUIDS

Type: 80B25.5HT 50Hz

Power data referre to:

Clear water[100%];20°C;998.3kg/m³;1.005mm²/s

Curve tolerance ISO 9906 2B



Automated Environmental Systems Ltd

Unit B, Anglian Lane
Bury St. Edmunds
Suffolk
IP32 6SR
01284 658770
www.automatedenvironmentalsystems.co.uk
sales@automatedenvironmentalsystems.co.uk



Technical Data (standard pumps)

Pump name: HIGH TEMPERATURE LIQUIDS

Type: 80B25.5HT 50Hz

Technical Data						
Rated Capacity	45	m ³ /h	Rated Head	20	m	
Shaft power P2	4.0	kW	PH	6~10		
Electric pump efficiency	53.23	%	Solid passage	35	mm	
Test medium	Clean water		Temperature	0~80 °C		
Density of test medium	998.3	kg/m ³				
Pump Data						
Discharge port	80 PN6 (EN1092)		Flow	Max.	88.0 m ³ /h	
Suction port			Head	Max.	28.0 m	
Impeller type	Dual-channel		Pump efficiency max.	64.3 %		
Motor Data						
Motor type						
Motor design	Submersible motor		Insulation class	H		
Power input P1	6.3584	kW	Degree of protection	IP68		
Rated power P2	5.5	kW	Explosion protection(Yes/No)	N		
Power frequency	50	Hz	Efficiency at 100% rated power	86.5	%	
Number of poles	2		Efficiency at 75% rated power	87.0	%	
Sync speed	3000	rpm	Efficiency at 50% rated power	86.1	%	
Rated voltage	415	V±10%	3~	cos phi at 100% rated power	0.90	
Rated current	9.8	A		cos phi at 75% rated power	0.86	
Starting current(direct starting)	70.0	A		cos phi at 50% rated power	0.75	
Max Starts/Hour	30					
Materials / Weight						
Motor housing	Cast iron		Bolts	AISI 304		
Pump housing	Cast iron		Elastomeres	FPM(FKM)		
Impeller	Cast iron		Motor cooling jacket			
Wear ring			Motor shaft	AISI 304		
Mechanical seal	on motor side	Carbon-Ceramic		Bearing	Upper	Deep Groove Ball
	on pump side	SiC-SiC			Lower	Deep Groove Ball
Cable length	8	m		Net weight (Including cable)	77.5	kg

Automated Environmental Systems Ltd

Unit B, Anglian Lane

Bury St. Edmunds

Suffolk

IP32 6SR

01284 658770

www.automatedenvironmentalsystems.co.uk

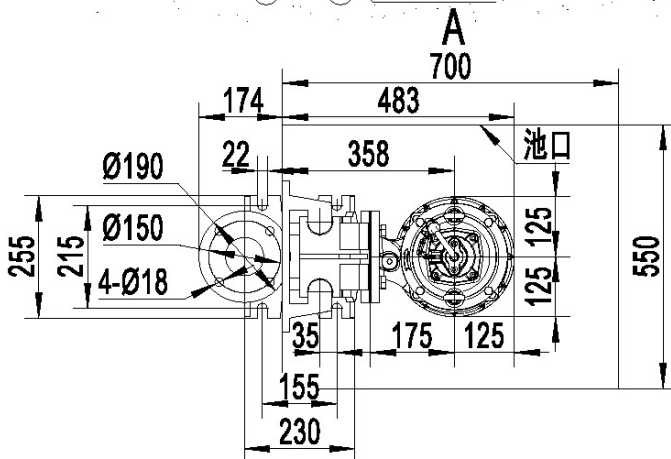
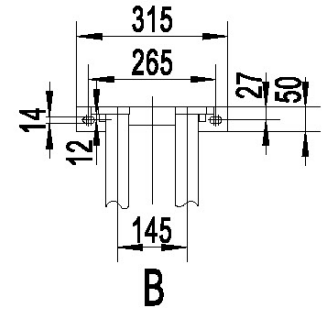
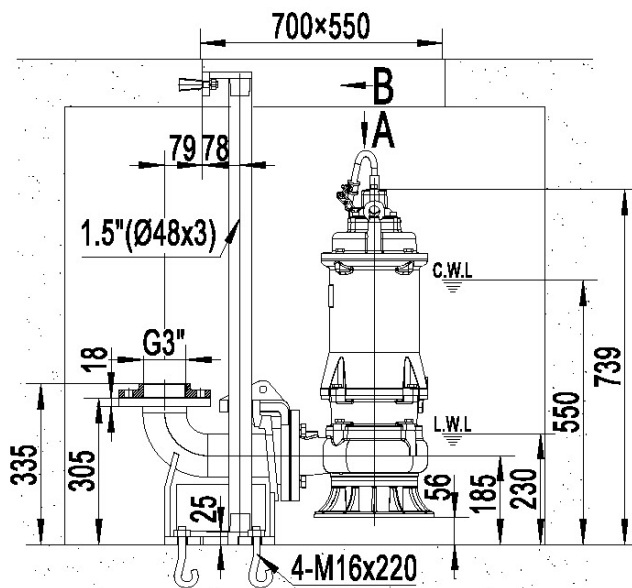
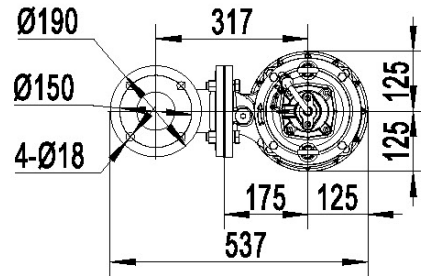
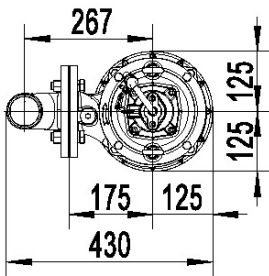
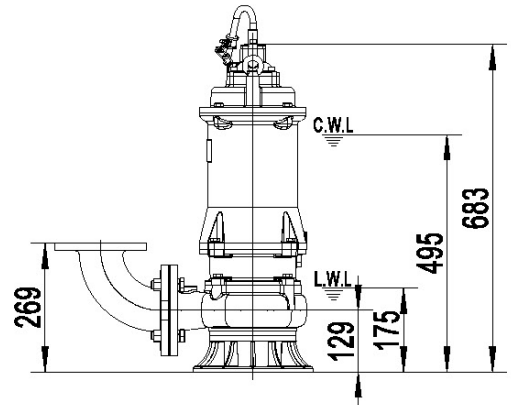
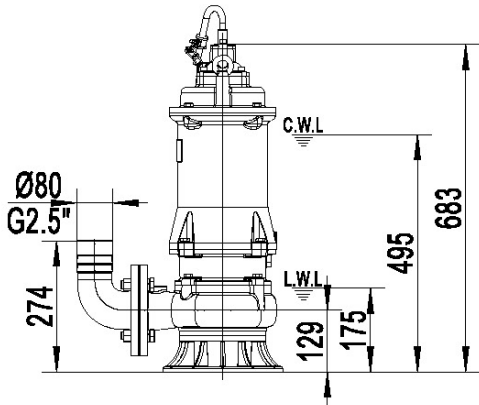
sales@automatedenvironmentalsystems.co.uk



Dimensions

Pump name: HIGH TEMPERATURE LIQUIDS

Type: 80B25.5HT 50Hz



Automated Environmental Systems Ltd

Unit B, Anglian Lane

Bury St. Edmunds

Suffolk

IP32 6SR

01284 658770

www.automatedenvironmentalsystems.co.uk

sales@automatedenvironmentalsystems.co.uk

