

# POOL PRODUCTS 2024

[automatedenvironmentalsystems.co.uk](http://automatedenvironmentalsystems.co.uk)

## The Remora difference

The first Remora pool products arrived in 2020, and the Remora On/Off and Inverter heat pumps quickly caught the imagination of customers with their combination of performance and features.

Working closely with manufacturers, we have continued to deliver efficient performance, the very latest technology, features customers want and reliable build quality.

The result is a range of heat pumps that delivers exceptional COP and heating efficiency, the latest model the Remora Professional includes our first 14kW plug and play heat pump and a 35kW high capacity double fan unit for larger pools.



## Flexibility you can trust

Thanks to the removal of parameters restricting the heating range to 20°C or above, Remora heat pumps offer a level of flexibility that sets them apart from other brands and extends their use beyond just pools.

Remora heat pumps are perfect partners for Koi ponds and are suited to other commercial and domestic applications that require heating or cooling to lower set points (not suitable for use with home heating systems).

Remora were among the first full size heat pumps to come with factory fitted mains cables and plugs, giving plug and play functionality, a feature previously only available on small Summer only heaters.

Remora Professional heat pumps have a four year warranty and ten year (total) parts warranty on the compressor and heat exchanger. Remora Inverter and On/Off heat pumps have a three year warranty and seven years parts (as above).



# INDEX



**PROFESSIONAL  
HEAT PUMP**

**4**



**INVERTER  
HEAT PUMP**

**5**



**ON/OFF  
HEAT PUMP**

**6**



**MINI H  
HEAT PUMP**

**7**



**FSF  
FILTER SET**

**7**



**V  
TOP MOUNT**

**9**



**S  
SIDE MOUNT**

**10**



**7320  
POOL ROBOT**

**11**



**SPV  
PUMP**

**12**



**CL  
INLINE FEEDER**

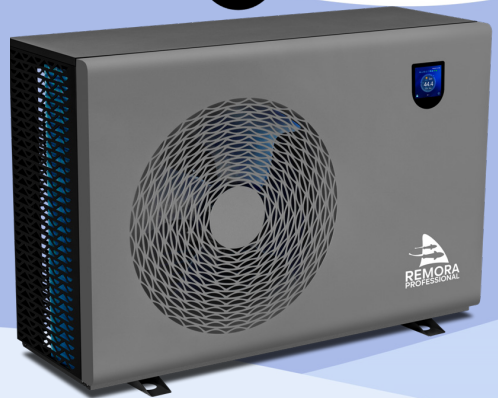
**13**

# REMORA PROFESSIONAL INVERTER HEAT PUMP



## Key features

- Wi-Fi connectivity with 'Smart Life' iOS / Android App
- Four preset modes; Boost, Eco, Silent and Smart
- 8kW, 10kW and 14kW models fitted with mains cable, RCD and plug
- 1½ inch female threaded or glue socket water connections
- Remote access for troubleshooting without engineer's visit
- Advanced parameters for individualised setup and running
- High quality powder coated galvanised steel cabinet
- Patented flush fit touch control colour LCD screen
- Extended season model works down to -15°C
- Automatic hot gas defrosting
- Advanced stepless DC inverter system
- Low noise airstream design, >30 dB(A) at 10 metre
- Stepless twin rotary inverter compressor
- DC brushless fan motor
- EEV throttling technology
- Spiral Titanium heat exchanger
- R32 gas
- Winter cover
- Four year warranty
- Ten year warranty on heat exchanger and compressor (parts only after year four)



Remora Professional Swimming Pool Heat Pump

		Professional 8	Professional 10	Professional 14	Professional 19	Professional 25	Professional 35
Air 27°C/ Water 27°C/ Humid. 80%	Capacity (kW)	4.2 – 8.6	5.5 – 10.70	7.2 – 14.5	9.57 – 18.9	13.95 – 25.7	20.15 – 41.15
	Input power (kW)	0.48 – 1.21	0.65 – 1.4	0.74 – 1.91	0.99 – 2.85	1.82 – 5.6	4.5 – 7.43
	COP range	7.15 – 16.58	7.62 – 17.55	7.6 – 17.52	6.63 – 17.05	5.92–15.0	6.78 – 15.02
Air 15°C/ Water 26°C/ Humid.70%	Capacity (kW)	2.45 – 5.75	3.75 – 7.5	4.33 – 10.45	6.02 – 13.8	9.31 – 17.85	13.92 – 33.72
	Input power (kW)	0.45 – 1.15	0.73 – 1.43	0.93 – 2.01	1.1 – 2.75	1.73 – 3.96	2.1 – 7.45
	COP range	5.02 – 8.16	5.25 – 8.55	5.2 – 8.53	5.01 – 8.25	4.50 – 8.01	5.2 – 8.05
Working ambient temperature	°C	-15-43					
Power supply		220V/ 1Ph					
Rated input power	kW						
Rated input current	A						
Maximum input current	A	7.5	9.5	11.5	18.48	25.5	36
Refrigerant		R32					
Compressor type		Inverter					
DC fan		1	1	1	1	1	2
Air flow		Horizontal					
Evaporator		Hydrophilic fin and copper tube					
Water flow	m <sup>3</sup> /h	3 – 5	4 – 6	5 – 7	7 – 9	10 – 13	17 – 20
Unit net dimensions	L*W*H mm	870*380*653		1020*408*715		1170*451*1389	
Net weight	kg	43	47	52	62	72	138
Sound pressure dB(A)10m		<29	<29	<29	<30	<30	<45
Controller		Digital touch screen					
WiFi connectivity		Yes					

# REMORA INVERTER HEAT PUMP



## Key features

- Wi-Fi connectivity with iOS / Android 'Smart Life' App
- Three preset modes; Powerful, Silent and Smart
- 9kW and 12kW models fitted with mains cable, RCD and plug
- 1½ inch female threaded or glue socket water connections
- Heats and cools
- Extended season model works down to -15°C,
- Automatic hot gas defrosting
- Black ABS corrosion resistant cabinet
- Advanced stepless DC inverter system
- Low noise airstream design, 45 dB(A) at 1 metre
- Stepless twin rotary inverter compressor
- DC brushless fan motor
- EEV throttling technology
- Spiral Titanium heat exchanger
- R32 gas
- Winter cover
- Three year warranty
- Seven year parts on heat exchanger and compressor



		Remora i9	Remora i12	Remora i15	Remora i19	Remora i27
Air 27°C/ Water 26°C/ Humid.	capacity (kW)	9.03	12.02	15.25	19.21	27.28
80%	COP range	6.30 ~ 17.5	6.55 ~ 18.2	7.32 ~ 18.5	6.53 ~ 18.2	6.20 ~ 15.0
Air 15°C/ Water 26°C/ Humid.	capacity (kW)	5.94	7.54	10.85	13.61	19.71
70%	COP range	5.1 ~ 8.2	5.17 ~ 8.2	5.2 ~ 8.5	5.01 ~ 8.1	4.61 ~ 8.0
Working ambient temperature	°C	-15~43				
Power supply		220V / 1Ph				
Rated input power	kW	0.12 ~ 1.35	0.16 ~ 1.86	0.2 ~ 2.24	0.23 ~ 2.87	0.75 ~ 5.22
Rated input current	A	0.55 ~ 6.14	0.73 ~ 8.5	0.92 ~ 10.2	1.05 ~ 13.05	3.45 ~ 23.7
Maximum input current	A	6.8	9.1	11.5	14.48	25.5
Refrigerant		R32				
Compressor model		TOSHIBA	TOSHIBA	MITSUBISHI	MITSUBISHI	TOSHIBA
Compressor type		Inverter				
DC fan		Yes				
Air flow		Horizontal				
Evaporator		Hydrophilic fin and copper tube				
Condenser		Spiral threaded Titanium in PVC				
Package dimensions	L*W*H mm	850*390*688		960*408*793	1150*480*843	
Unit net dimensions	L*W*H mm	826*379*552		933*401*657	1125*470*707	
Net weight	kg	35	37	47	61	66
Sound pressure dB(A) 10m		<29	<29	<29	<30	<30
Water proof level		IPX4				
Wi-Fi connectivity		Yes				

# REMORA ON/OFF HEAT PUMP



## Key features

- Wi-Fi connectivity with iOS / Android 'Smart Life' App
- 6kW, 8kW and 10kW models fitted with mains cable and RCD plug
- 1½ inch female threaded or glue socket water connections
- Heats and cools
- Extended season model works down to -15°C
- Automatic hot gas defrosting
- Black ABS corrosion resistant cabinet
- Easy digital temperature control with LCD display
- Low noise design, up to 30 dB(A) at 10 metre
- COP of up to 7.81 (A24/W26)
- Spiral Titanium heat exchanger
- R32 gas
- Winter cover
- Three year warranty
- Seven year parts on heat exchanger and compressor



			Remora f6	Remora f8	Remora f10	Remora f12	Remora f15	Remora f20	Remora f23	
Ambient 24°C 28°C out	Water 26°C in, 28°C out	capacity (kW)	6.12	8.79	10.49	12.08	15.83	20.14	23.32	
		power input(kW)	0.85	1.21	1.38	1.67	2.03	2.71	3.74	
		COP	7.22	7.27	7.59	7.25	7.81	7.42	6.23	
Ambient 15°C 28°C out	Water 26°C in, 28°C out	capacity (kW)	4.7	6.7	8.12	9.48	12.74	16.55	18.02	
		power input(kW)	0.87	1.23	1.41	1.71	2.08	2.74	3.49	
		COP	5.40	5.45	5.74	5.55	6.13	6.04	5.16	
Ambient 35°C 27°C out	Water 29°C in, 27°C out	capacity (kW)	5.04	7.19	8.29	9.13	12.38	13.25	14.35	
		power input(kW)	1.09	1.59	1.88	2.12	2.75	3.31	4.61	
		EER	4.63	4.51	4.42	4.3	4.51	4.01	3.11	
Working ambient temperature		°C	-15-43							
Power supply			220-240V/1/50Hz							
Max power input		kW	1.6	2.1	2.51	3.15	3.93	5.82	5.74	
Max current		A	7.27	9.58	11.43	14.37	17.86	25.3	27.4	
Water flow volume		m <sup>3</sup> /h	2.63	3.78	4.51	5.19	6.81	8.8	10.03	
Water connector size		inch	1.5" female							
Compressor type			Rotary						Scroll	
Compressor qty		PCS	1	1	1	1	1	1	1	
Fan qty		PCS	1	1	1	1	1	1	1	
Air flow			Horizontal							
Evaporator			Hydrophilic fin and copper tube							
Condenser			Spiral threaded Titanium in PVC							
Refrigerant type			R32						R410A	
Min pressure/Max pressure			1.3/4.2Mpa							
Material of casing			ABS plastics							
Sound pressure 10m		dB(A)	28	29	29	30	30	30	30	
Water proof level			IPX4							
Unit net dimensions(L*W*H)		mm	826*379*552		933*401*657			1125*470*707		
Package dimensions(L*W*H)		mm	850*390*688		960*408*793			1150*480*843		
Net weight		kg	44	54	58	72	75	78	94	
WiFi connectivity			Yes							

# REMORA MINI HORIZONTAL HEAT PUMP



## Key features

- 3kW model, ideal for small above ground pools
- Compact case, 397mm (H) x 447mm (W) x 320mm (D)
- Plug and Play, fitted with mains cable, RCD and plug
- Supplied with 32/38mm hose tails
- Summer only model works above 12 degrees (air temp)
- Auto operation, auto-restart and auto defrost
- Easy digital temperature control with LCD display
- Quiet running, less than 32dB(A) at 10m
- COP of up to 5.44
- Titanium heat exchanger resistant to salt and chlorine
- R32 gas
- Two year warranty
- Seven year parts on heat exchanger and compressor



	Capacity (kW)	3.21
Ambient 26°C / Water 26°C in, 28°C out	Power input (kW)	0.59
	COP	5.44
	Capacity (kW)	2.12
Ambient 15°C / Water 26°C in, 28°C out	Power input (kW)	0.52
	COP	4.06
Power supply	V/Hz	220-240 ~ 50Hz
Max power input	kW	0.68
Max current	A	3.09
Quantity of compressor		1
Compressor type		Rotary
Evaporator		Hydrophilic aluminium fin
Water flow	m3/h	1.3
Refrigerant		R32
Min pressure / Max pressure	Mpa	1.5 / 4.15
Net dimensions (L*W*H)	mm	447*320*397
Sound pressure (10m)	dB(A)	<32
Water connection	mm	32
Fan direction		Horizontal
Waterproof grade		IPX4

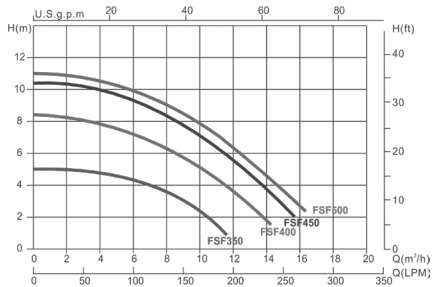
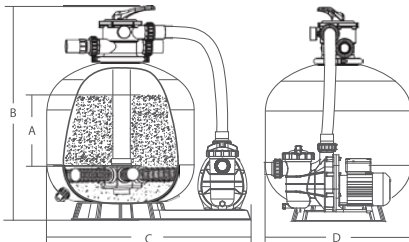
# REMORA FSF PUMP & FILTER SET



## Key features

- Easy installation with pre-installed plumbing system and base
- Simple operation with six-way top mounted multi-port valve
- Choice of four sets, 14 to 20 inch filters with matched pumps
- Suitable for pools from 20m<sup>3</sup> to 60m<sup>3</sup>
- Sand size 0.5 – 0.8mm
- Maximum operating pressure 2.5 bar
- Fitted with UK plug (requires socket with RCD protection)
- 1½ inch / 50mm stepped glue connections

Model	Filter	Pump	Valve Connections	Sand (kg)	A (mm)	B (mm)	C (mm)	D (mm)	Max. Flow Rate
FSF350	V350	SS033	1.5" / 50mm	20	160	680	555	355	72lpm 4.32m <sup>3</sup> /h
FSF400	V400	SS050	1.5" / 50mm	35	175	759	760	410	108lpm 6.48m <sup>3</sup> /h
FSF450	V450	SS075	1.5" / 50mm	45	210	813	760	455	135lpm 8.10m <sup>3</sup> /h
FSF500	V500	SC100	1.5" / 50mm	85	235	856	760	535	185lpm 11.10m <sup>3</sup> /h



Note: Flow curve information based on 220V/50HZ motor.





# REMORA V TOP MOUNT FILTER

## Key features

- Bobbin wound tank for strength
- Non-corrosive resin and fibreglass
- UV resistant for long life
- Reliable, heavy duty performance
- Choice of sizes, 14 to 25 inch filter tanks
- Top mounted six-way multi-port valve
- Clamp lock for 360° installation
- Sand size 0.5 – 0.8mm
- Maximum operating pressure 2.5 bar
- Sight glass and pressure gauge included
- 1½ inch / 50mm stepped glue PVC unions



Model	Diameter (mm)	Height (mm)	Flow rate (m <sup>3</sup> /h)	Filter Area (m <sup>2</sup> )	Connections (inch/mm)	Sand (Kg)
V350	355	726	4.32	0.09	1.5/50	20
V400	410	757	6.48	0.13	1.5/50	35
V450	455	814	8.10	0.16	1.5/50	45
V500	535	845	11.10	0.22	1.5/50	85
V650	635	950	15.60	0.32	1.5/50	145

# REMORA S

## SIDE MOUNT FILTER



### Key features

- Bobbin wound tank for strength
- Non-corrosive resin and fibreglass
- UV resistant for long life
- Reliable, heavy duty performance
- Choice of sizes, 18 to 28 inch filter tanks
- Side mounted six-way multi-port valve
- Clear lid with pressure gauge
- Sand size 0.5 – 0.8mm
- Maximum operating pressure 2.5 bar
- Sight glass and pressure gauge included
- 1½ inch / 50mm stepped glue PVC unions (2" on S700B)



Model	Diameter (mm)	Height (mm)	Flow rate (m³/h)	Filter Area (m²)	Connections (inch/mm)	Sand (Kg)
S450	455	730	8.1	0.16	1.5/50	45
S500	535	770	11.10	0.22	1.5/50	85
S650	635	850	15.60	0.32	1.5/50	145
S700	710	960	19.50	0.40	1.5/50	210
S700B	723	890	20.16	0.41	2.0/63	215

# REMORA 7320 ROBOT CLEANER



## Key features

- Cable length is suitable for maximum pool size of 11m x 5.5m
- Cleans pool floor, walls and waterline
- Suitable for in-ground and framed above-ground pool surfaces
- Cleans pools with liners, rough and mosaic tiles and painted surfaces
- Floating anti-twist cable box, power and operation LEDs
- Propulsion mode with geared motorised brushes
- Four active side brushes help to clean corners
- One or three hour automatic cleaning cycle
- Built-in escape feature
- Top access filter basket with transparent lid
- Collects dirt and debris as small as 0.59mm
- Large volume basket to collect leaves and medium debris
- Complimentary disposable filter for fine particles (50 micron)
- Wide suction of 50cm
- Supplied with UK plug fitted
- Two years warranty (except filters, basket and rollers)
- Optional foam rollers for slick pool surfaces

## Technical data

- Maximum depth of pool 2.5m
- Minimum water temperature 12°C
- Requires pH balance of around 7.2
- Cable length – 18m (15m + 3m)
- Transformer voltage 22V DC
- Power consumption – less than 100W
- Dimensions – 41cm x 37cm x 34cm
- Weight 9.2 Kg

## Reviews

“A fantastic pool cleaner, does what it says on the tin, and far better value than some others on the market.”

“Works like a dream, better than the more expensive one that just packed up. Highly recommend this product.”



# REMORA SPV150

## VARIABLE SPEED PUMP



### Key features

- Super quiet operation when running at the low RPM mode
- Modbus RS485 communication port
- PMM motor gains efficiency by the magnets working to spin the rotor, which achieves energy cost saving up to 80%
- Designed and constructed to maximise the pump's hydraulic performance
- The motor shaft and shaft seal are AISI316 for reliability and suitability for saltwater pools
- One touch controller, preset speed programs and schedules, to have the most efficient pool, spa or any water feature connected
- Input power 1.3kW / output 1.5HP / 800-3400 rpm
- Water connections are 1½ inch, 50mm or 2 inch glue sockets



### Technical data

- Permanent Magnet Motor (PMM)
- Seals bellows – EPDM
- Totally Enclosed Fan Cooled (TEFC)
- Motor shaft – SS316
- Pump casing ABS + glass fibre
- Impeller PPO
- Strainer basket and base in PP + Glass fibre
- Spring – SS316
- Stationary face – SIC, rotating face – Graphite
- Modbus: RTU over RS-485

# REMORA CL CHEMICAL FEEDER

## CL01

- Automated chlorination of pools up to 100m<sup>3</sup>
- Holds up to 102 chlorine or bromine tablets (2Kg)
- Provides 1-2 weeks chlorination for larger pools
- Easy in-line installation after existing equipment (a check valve should be fitted before the feeder)
- Dial control allows you to adjust flow rate through the feeder
- Water connections 1½ inch or 50mm
- Compact size, 420mm x 330mm x 110mm (H x L x W)

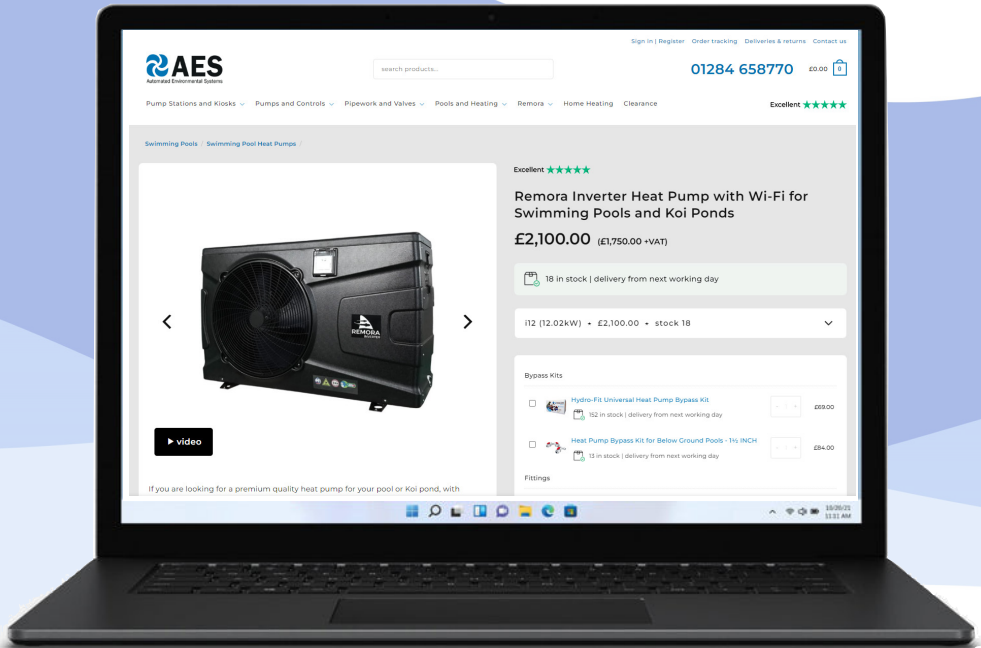


## CL02

- Automated chlorination of pools up to 108m<sup>3</sup>
- Holds up to 198 chlorine or bromine tablets (4Kg)
- Provides 1-2 weeks chlorination for larger pools
- Easy in-line installation after existing equipment (a check valve should be fitted before the feeder)
- Dial control allows you to adjust flow rate through the feeder
- Water connections 1½ inch or 50mm
- Compact size, 705mm x 330mm x 110mm (H x L x W)

# BUY ONLINE

## NEXT WORKING DAY DELIVERY\*



[www.automatedenvironmentalsystems.co.uk](http://www.automatedenvironmentalsystems.co.uk)

**Buy Now**

\* Order in-stock items by 2pm Monday to Friday for next working day delivery, UK mainland only.  
£12 delivery charge for all orders under £300, free delivery on orders over £300.  
Prices correct as of February 2024, prices subject to change, please see website for latest prices



## Automated Environmental Systems

Unit B, Anglian Lane, Bury St. Edmunds, Suffolk, IP32 6SR

**01284 658770**

(Mon-Fri 9am to 5pm)

**[sales@automatedenvironmentalsystems.co.uk](mailto:sales@automatedenvironmentalsystems.co.uk)**

We are rated excellent on  Trustpilot



Remora® is a Registered Trademark in the UK

