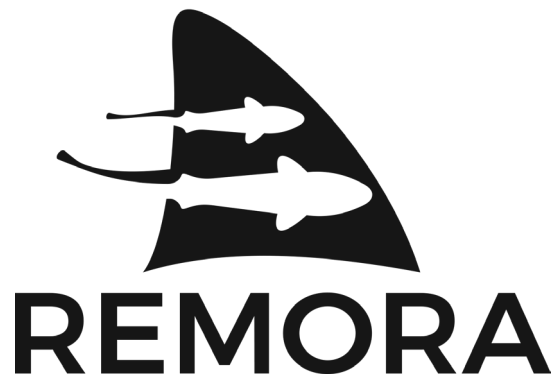




REMORA PROFESSIONAL

Inverter Heat Pump





The Remora difference

Thanks to the removal of parameters that restrict the heating range to 20°C or above, Remora heat pumps offer flexibility that sets them apart from other brands and extends their use beyond just pools.

Remora Professionals are perfect partners for the exacting requirements of Koi ponds and are suited to other commercial and domestic applications that require heating or cooling to lower set points (not suitable for home heating systems).

Remora heat pumps were amongst the first full size units to come with factory fitted mains cables and plugs*, giving true plug and play functionality, a feature previously restricted to small summer only heaters for above-ground pools.

Remora Professional heat pumps are backed by an industry leading four year warranty and a full ten year parts warranty on the compressor and heat exchanger.

*Largest capacity model with fitted mains cable is 14kW



We work closely with the manufacturer of our Remora heat pumps, through a process of continual development we can deliver more efficient performance, the latest technology and reliable build quality.

The result is a range of heat pumps that deliver exceptional COP and heating efficiency, the Remora Professional Inverter range includes our first 14kW plug and play model and a 35kW high capacity model for larger pools.

Sizing your heat pump

Heat pumps are an investment, normally paying for themselves with the savings you make in running costs.

When sizing a heat pump we don't just ask how big your pool is, instead we ask a series of questions such as how and when you use your pool, what temperature you want to achieve, what filter equipment you have connected and how well insulated your pool is – the answers help us to advise you on the correct heat pump for your needs.

Many of our customers choose to buy larger heat pumps - the extra heating capacity can provide an extended swimming season, higher water temperature, faster heating and even the option to increase your pool size at a later date - flexibility that can easily outweigh the additional cost.



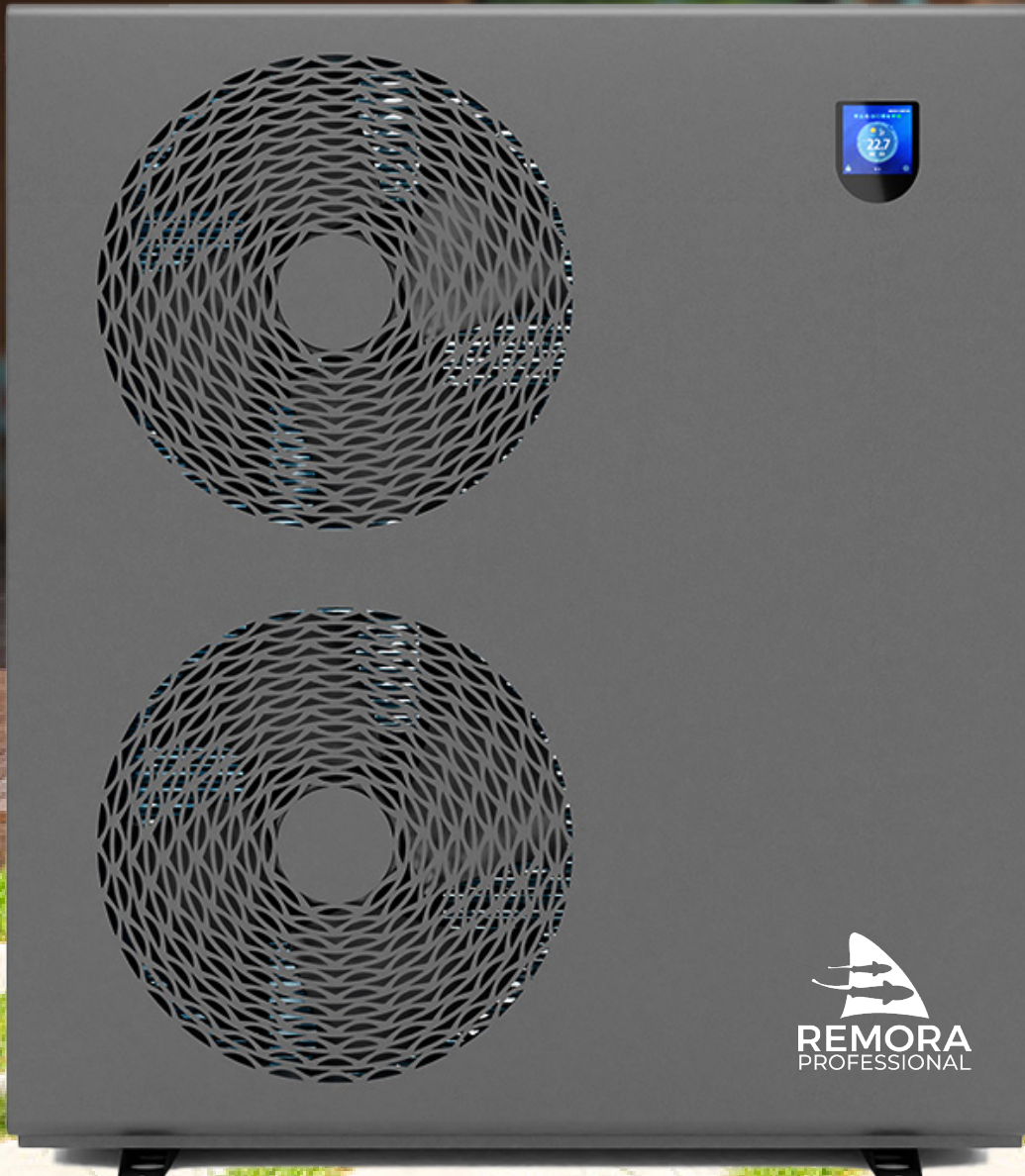


Everything about the Remora Professional says quality, whether it's the performance, the engineering or the intuitive controls



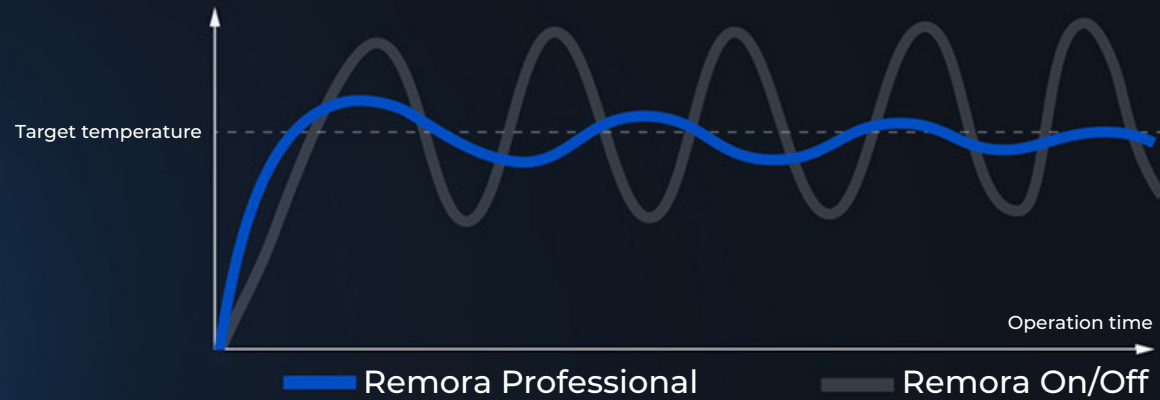
- ▶ Wi-Fi connectivity with Smart Life iOS / Android App
- ▶ Four preset modes; Boost, Eco, Silent and Smart
- ▶ 8kW, 10kW and 14kW models fitted with mains cable, RCD and plug
- ▶ 1 1/2 inch / 50mm female glue socket water connections
- ▶ Remote access for troubleshooting without engineer's visit
- ▶ Advanced parameters for individualised setup and running
- ▶ High quality powder coated galvanised steel cabinet
- ▶ Patented flush fit touch control colour LCD screen
- ▶ All season model works down to -15°C
- ▶ Automatic hot gas defrosting
- ▶ Advanced stepless DC inverter system
- ▶ Low noise airstream design, >30 dB(A) at 10 metre
- ▶ Stepless twin rotary inverter compressor
- ▶ DC brushless fan motor
- ▶ EEV throttling technology
- ▶ Spiral Titanium heat exchanger
- ▶ R32 gas
- ▶ Winter cover
- ▶ Four year warranty, ten year (total) parts warranty on the compressor and heat exchanger

Remora Professional 35



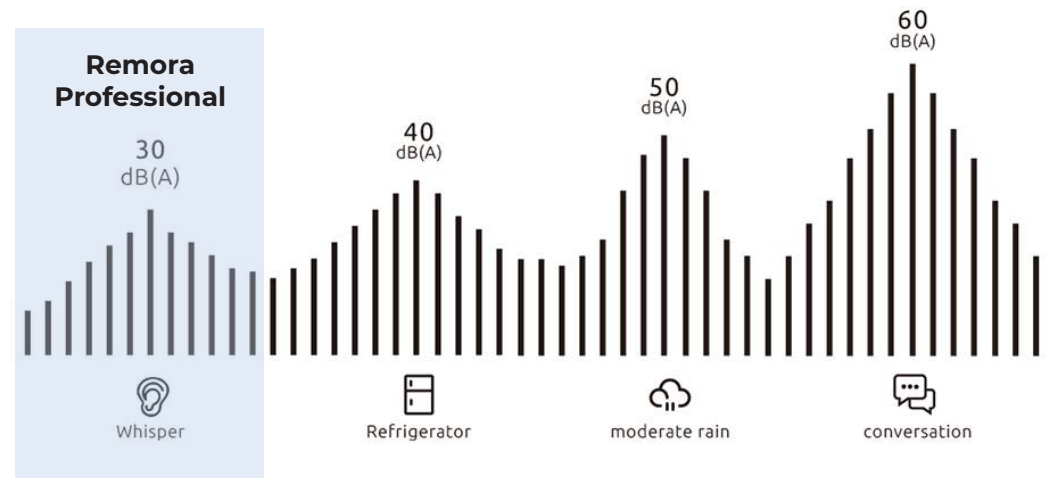
A heat pump is up to 80% more efficient than traditional methods of heating a swimming pool





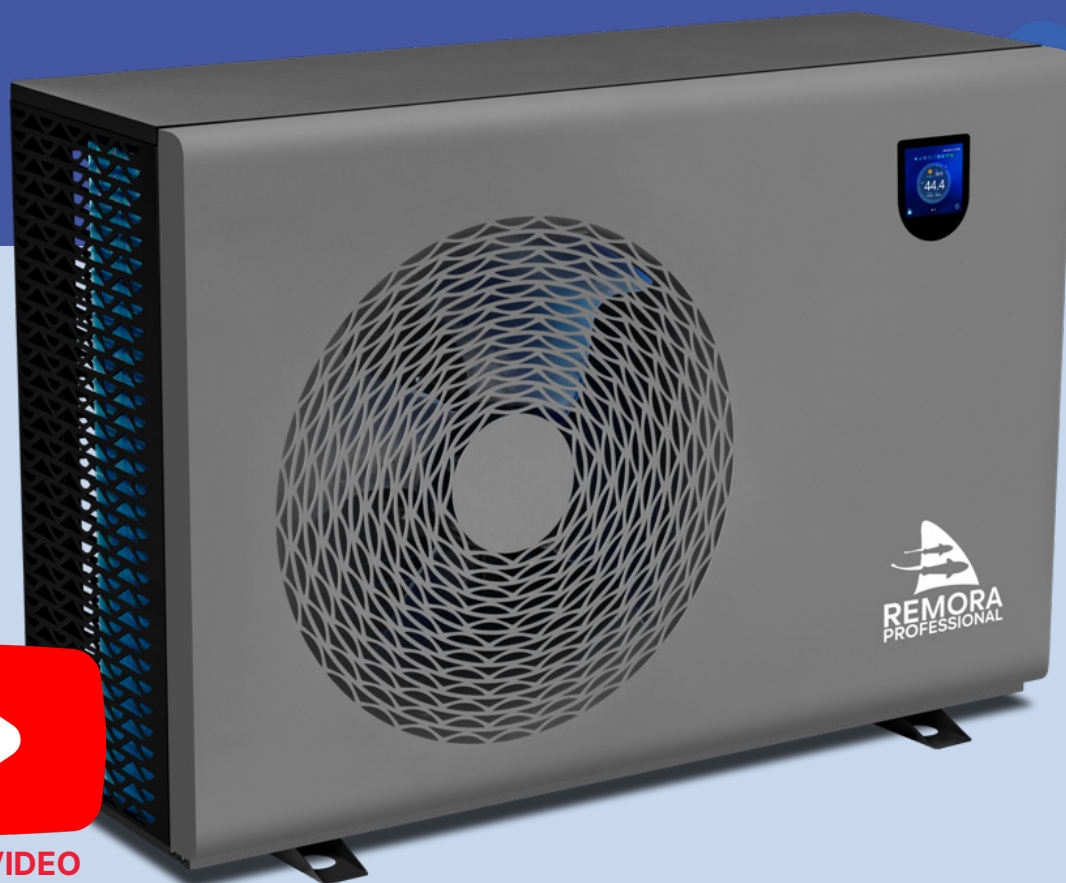
Full inverter technology for maximum efficiency

Remora Professional heat pumps have a low noise airstream design for very quiet operation, the average sound level is <math><30\text{ dB(A)}</math> at 10 metres



Smart control, Smart life

- ▶ Patented colour touch screen controller
- ▶ Smart Life App, works from anywhere in the world
- ▶ Software update via the App (iOS and Android)
- ▶ Remote diagnosis, save time/money on engineer call-outs
- ▶ Silent mode via timer
- ▶ Controller as easy as a smartphone to use

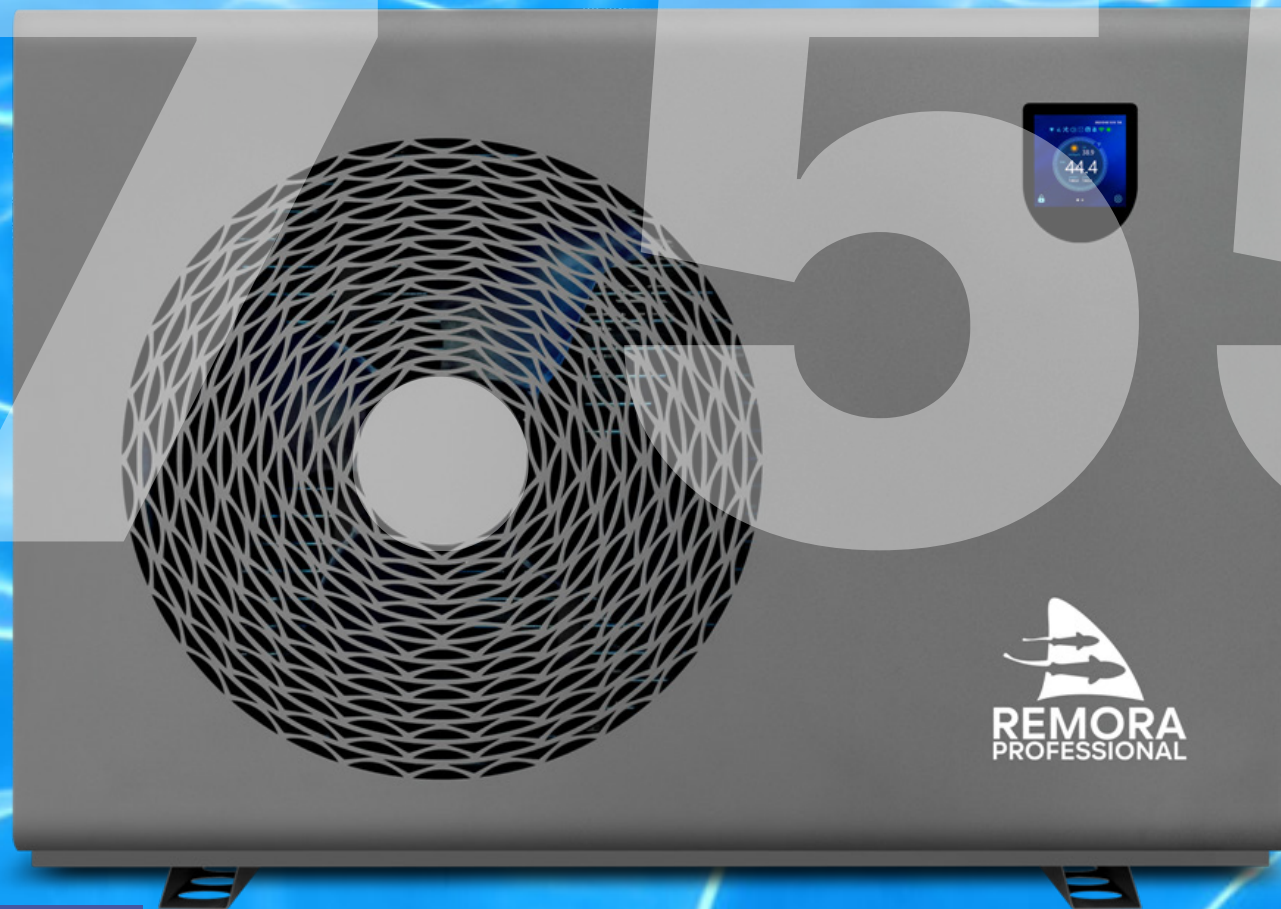


WATCH VIDEO



Remora Professional must be connected to suitable Wi-Fi network

17.55



HIGH COP

The Remora Professional 10 inverter heat pump can reach a COP as high as 17.55 at Air 27°C/ Water 27°C - meaning that for each kW of energy input, 17.55kW of heat would be output to your pool

REMORA PROFESSIONAL SPECIFICATIONS

		Professional 8	Professional 10	Professional 15	Professional 19	Professional 26	Professional 41
Ambient 27°C Water 27°C in, Humid 80%	Capacity (kW)	4.2 ~ 8.6	5.5 ~ 10.7	7.2 ~ 14.5	9.57 ~ 18.9	13.95 ~ 25.7	20.15 ~ 41.15
	Input Power (kW)	0.48 ~ 1.21	0.65 ~ 1.4	0.74 ~ 1.91	0.99 ~ 2.85	1.82 ~ 5.6	4.5 ~ 7.43
	COP	7.15 ~ 16.58	7.62 ~ 17.55	7.6 ~ 17.52	6.63 ~ 17.05	5.92 ~ 15.0	6.78 ~ 15.02
Ambient 15°C Water 26°C in, Humid 70%	Capacity (kW)	2.45 ~ 5.75	3.75 ~ 7.5	4.33 ~ 10.45	6.02 ~ 13.8	9.31 ~ 17.85	13.92 ~ 33.72
	Input Power (kW)	0.45 ~ 1.15	0.73 ~ 1.43	0.93 ~ 2.01	1.1 ~ 2.75	1.73 ~ 3.96	2.1 ~ 7.45
	COP	5.02 ~ 8.16	5.25 ~ 8.55	5.2 ~ 8.53	5.01 ~ 8.25	4.50 ~ 8.01	5.2 ~ 8.05
Working Ambient Temperature	°C	-15 ~ 43					
Power Supply		220V / 1Ph					
Minimum Fuse (C Type MCB)	A	13A Plug	13A Plug	13A Plug	25	32	40
Max Current	A	7.5	9.5	11.5	18.48	25.5	36
Compressor		GMCC*	GMCC*	Mitsubishi	GMCC*	GMCC*	GMCC*
DC Fan		1	1	1	1	1	2
Airflow		Horizontal					
Water Flow Volume	m³/h	3 ~ 5	4 ~ 6	5 ~ 7	7 ~ 9	10 ~ 13	17 ~ 20
Water Connector Size	inch / mm	1.5 / 50	1.5 / 50	1.5 / 50	1.5 / 50	1.5 / 50	1.5 / 50
Refrigerant Type		R32					
Material of Casing		Powder coated galvanised steel					
Sound Pressure 10m	dB(A)	<29	<29	<29	<30	<30	<30
Unit Net Dimensions(L*W*H)	mm	870*380*653			1020*408*715		1170*451*1389
Net Weight	Kg	43	47	52	62	72	138
Controller		LCD Touch screen					
Wi-Fi Connectivity		Smart Life App					

Automated Environmental Systems Ltd.

Unit B, Anglian Lane

Bury St. Edmunds, Suffolk

IP32 6SR

01284 658770

sales@automatedenvironmentalsystems.co.uk



Four year parts and labour warranty

Ten year (total) parts warranty on the compressor and heat exchanger

Remora® heat pumps and pool products have been branded exclusively for Automated Environmental Systems

Remora® is a Registered Trademark in the UK

*GMCC compressors manufactured by Midea/Toshiba