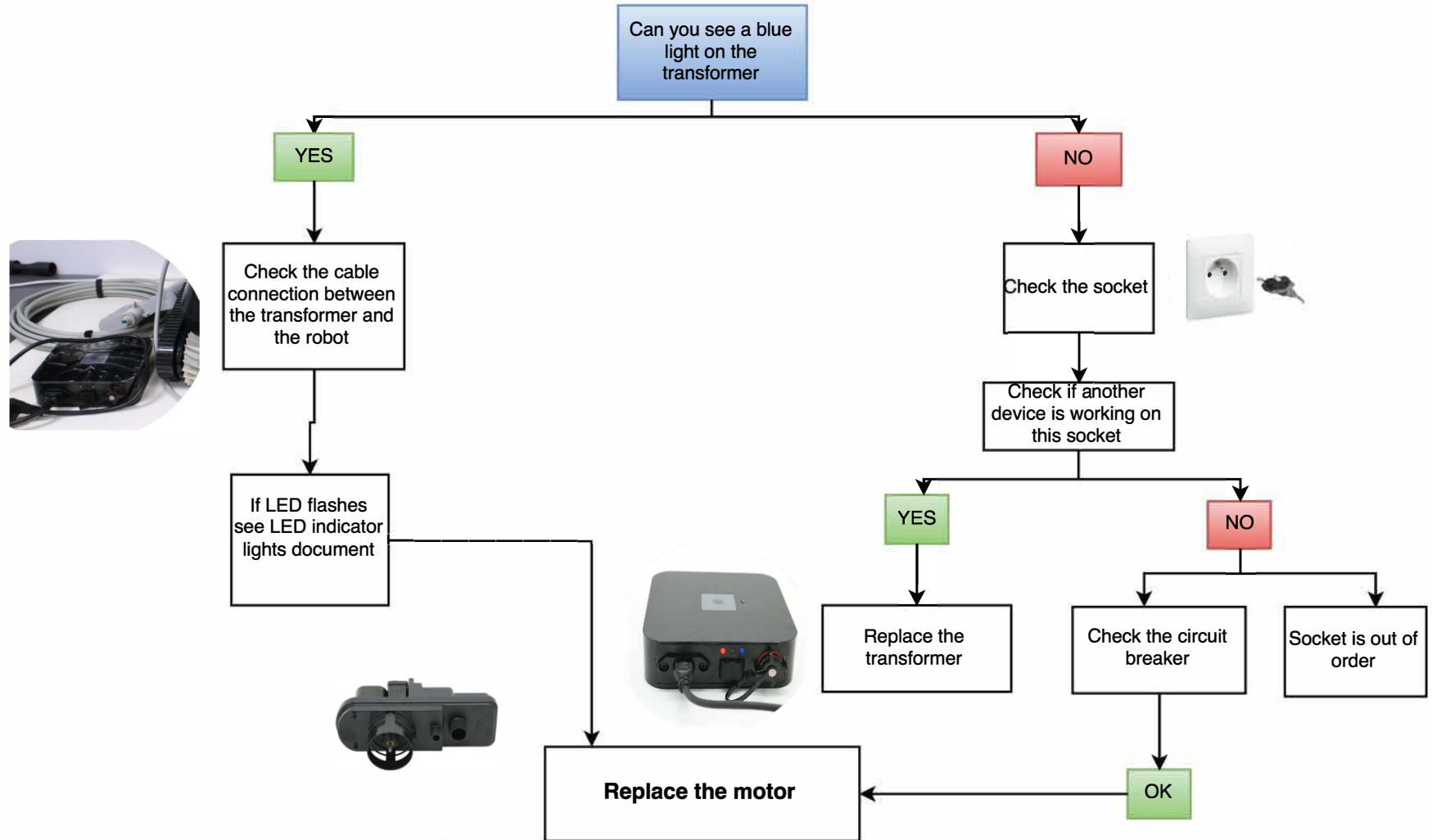


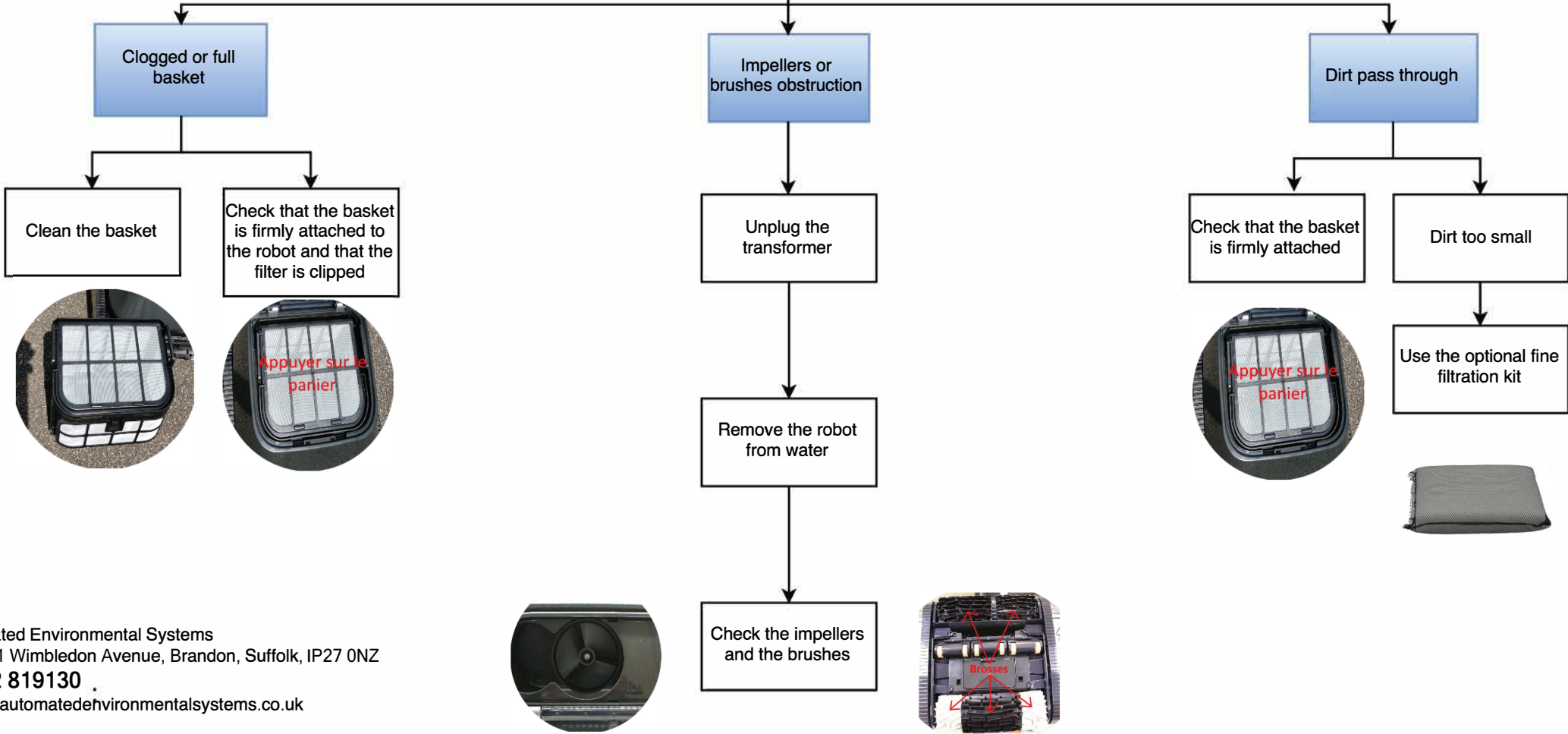
## ROBOT DOES NOT WORK

**Test in situation, connected and under water**



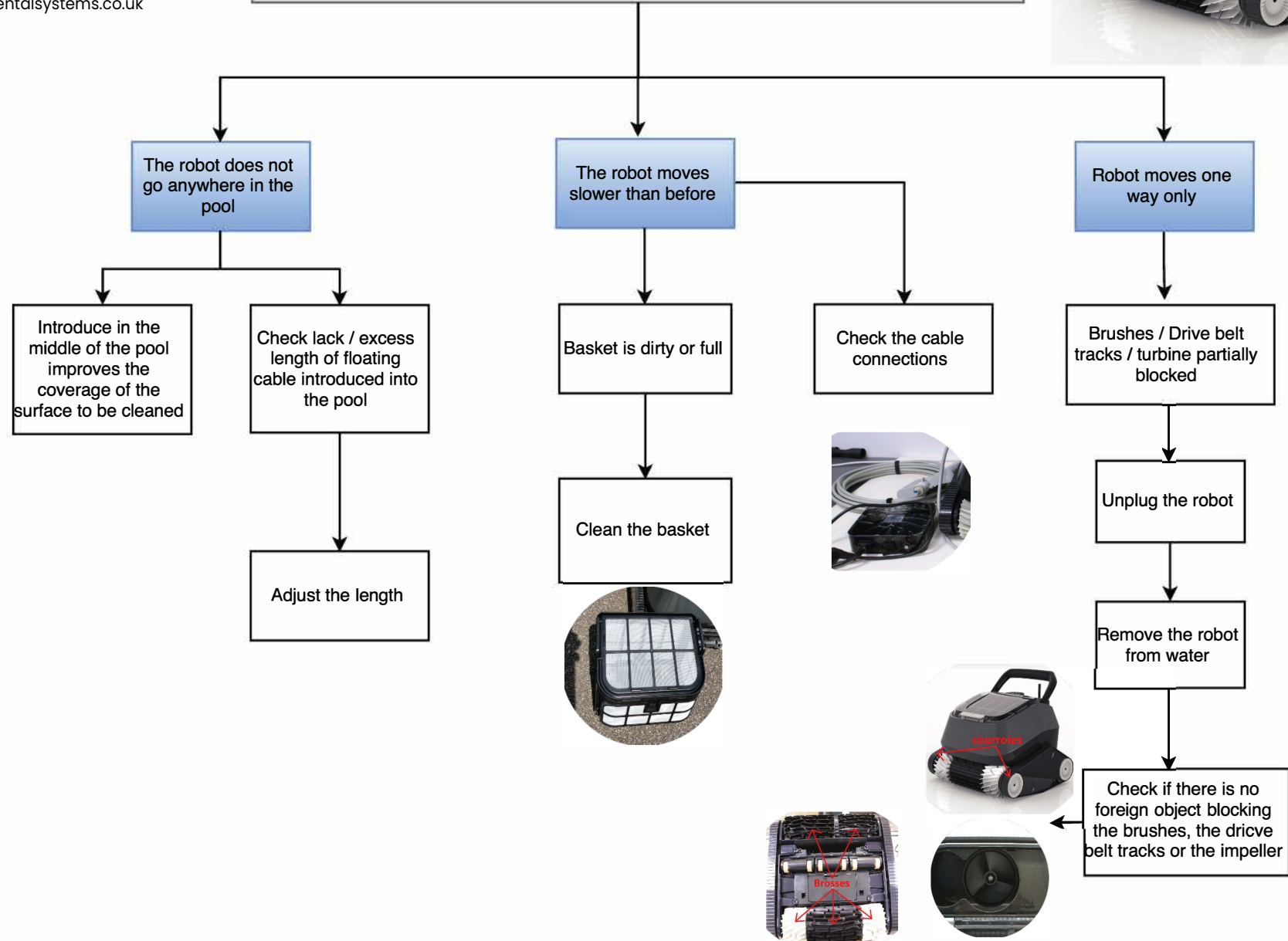


**Robot does not collect dirt**



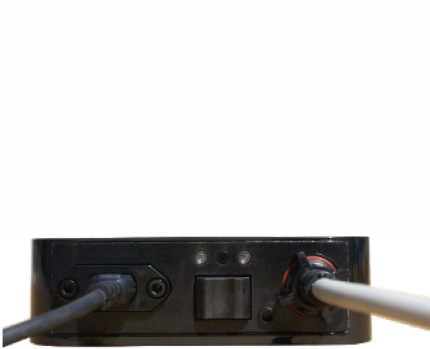


## Abnormal movements of the robot



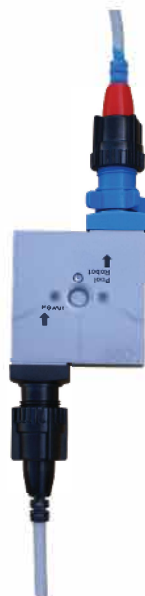
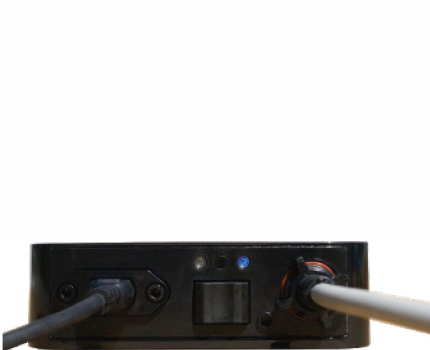
# New Square swivel

## Transformer not connected to Power



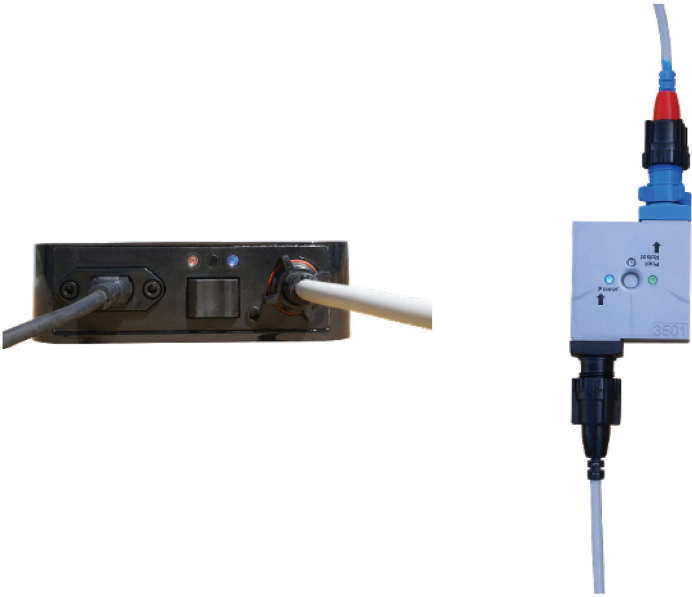
Transformer not connected to power socket  
= no light on the transformer and  
no light on swivel

## Transformer connected to Power - Cleaner OFF



Transformer connected to power socket but  
cleaner is OFF  
= blue light on the transformer and  
no light on swivel

# Transformer connected to Power - Cleaner ON



Transformer connected to power socket and cleaner is ON

= blue light and continuous red light on the transformer and blue light on the swivel + green light when the pump of the cleaner is working. When the pump stop (software programming) then the blue light stays on but the green light is off (so it is not a continuous green light when the cleaner is working).

# For Diagnostic

On the transformer



Blue light = transformer connected to power source.

red light after pressing the top button is showing that low voltage output is working

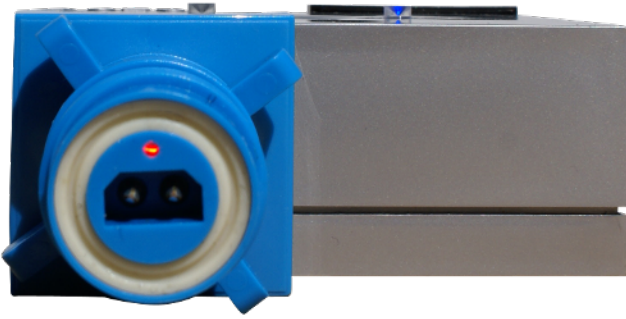


On the swivel

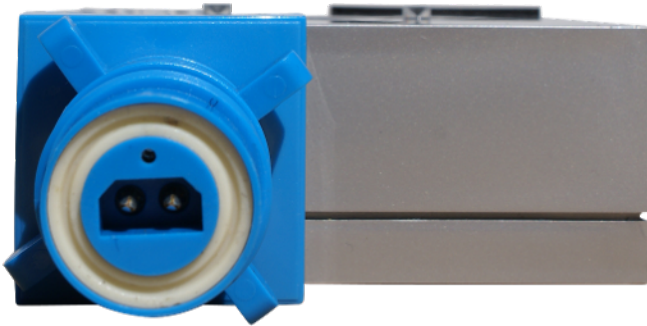
Blue light = electricity is arriving from the transformer (cleaner must be turned on by pressing the ON button on the transformer).

This means transformer cable and swivel entry is OK

Green light = is indicating that the pump is working. If during the cycle because of programming the pump is off then the green light turn out too



On the output of the swivel if you disconnect the cord going to the cleaner  
Turn On the cleaner  
Red light is showing that the low voltage is going thru the swivel.  
So the transformer is OK, the cord between the transformer and the swivel is Ok and the swivel is OK



On the output of the swivel if you disconnect the cord going to the cleaner  
if you turn On the cleaner and if the blue light is On but there is no red light at the output, this means the transformer is OK, the cord between the transformer and the swivel is OK but the swivel is defective (power in is OK but no power out)



Automated Environmental Systems Ltd., Unit 1, 1 Wimbledon Avenue, Brandon, IP27 0NZ

**Sales & Service 01842 819130**  
[sales@automatedenvironmentalsystems.co.uk](mailto:sales@automatedenvironmentalsystems.co.uk)