



## CLEARWAY UNDERGROUND HYDRANT, PN16, CTC

The Series 29/91 is the dimensional equivalent of a squat hydrant but with a full, straight bore from inlet to outlet. This allows a greatly enhanced flow-rate and ease of introduction and retrieval of pipe maintenance and measurement equipment. It is suitable for use with water and neutral liquids to a maximum temperature of +70°C. Complies with requirements of BS 750:2012 and BS EN1074-1:2000 and EN 14339:2005, underground hydrants. Also to BS EN 1074-6 for potable (drinking) water. Resistant to corrosion of other component parts. Resistant to disinfection products.

### Standards:

- BSI Kite marked to BS 750:2012
- Complies with Annex ZA of BS EN 14339 in respect of Construction Products Directive (CPR)
- WRAS approved (materials only)
- Outlet connectors - BS 336 to UK
- For potable water systems EN 1074-6:2004
- Corrosion resistant construction and relevant components coated in accordance with WIS-4-52-01. BS EN 1074 - 6 for disinfection products

### Test/Approvals:

- Hydraulic test to BS 750 Seat: 1.1 x PN. Body: 1.5 x PN. Operating torque test
- Resistance to operating load - MOT - 105NM - MST - 210NM
- Draining - Volume of retained water 12ml after 4 minutes.
- Hydraulic characteristics - Kv = 92 minimum 2000 l/min @ 1.7 Bar

### Service Conditions:

- Maximum Working Pressure: 16 Bar
- Temperature Range: -10°C to +70°C
- Insulation essential for temperatures of 0°C and below

### Features:

- Through bore. Bore Dimension full 80mm diameter with outlet removed.
- Exceeds flow requirements: Min flow 2000 l/min @1.7 Bar (Kv=92): specified in BSEN14339 Actual flow: Kv= 157
- Fully maintainable in situ
- Ductile iron construction
- Universal drilled inlet flange BS EN 1092:PN10/16, BS 10 Table D/E
- Patent Pending
- Stem drive - Stem cap in accordance with BS 750/ BS 5163-2
- Ductile iron coated with WRAS approved epoxy coating Blue RAL 5017, to 250 microns min, Holiday free in accordance with WIS 04-52-01
- Type 2c. Screwed down type with screwed 2½" round thread outlet
- Autofrost valve as standard

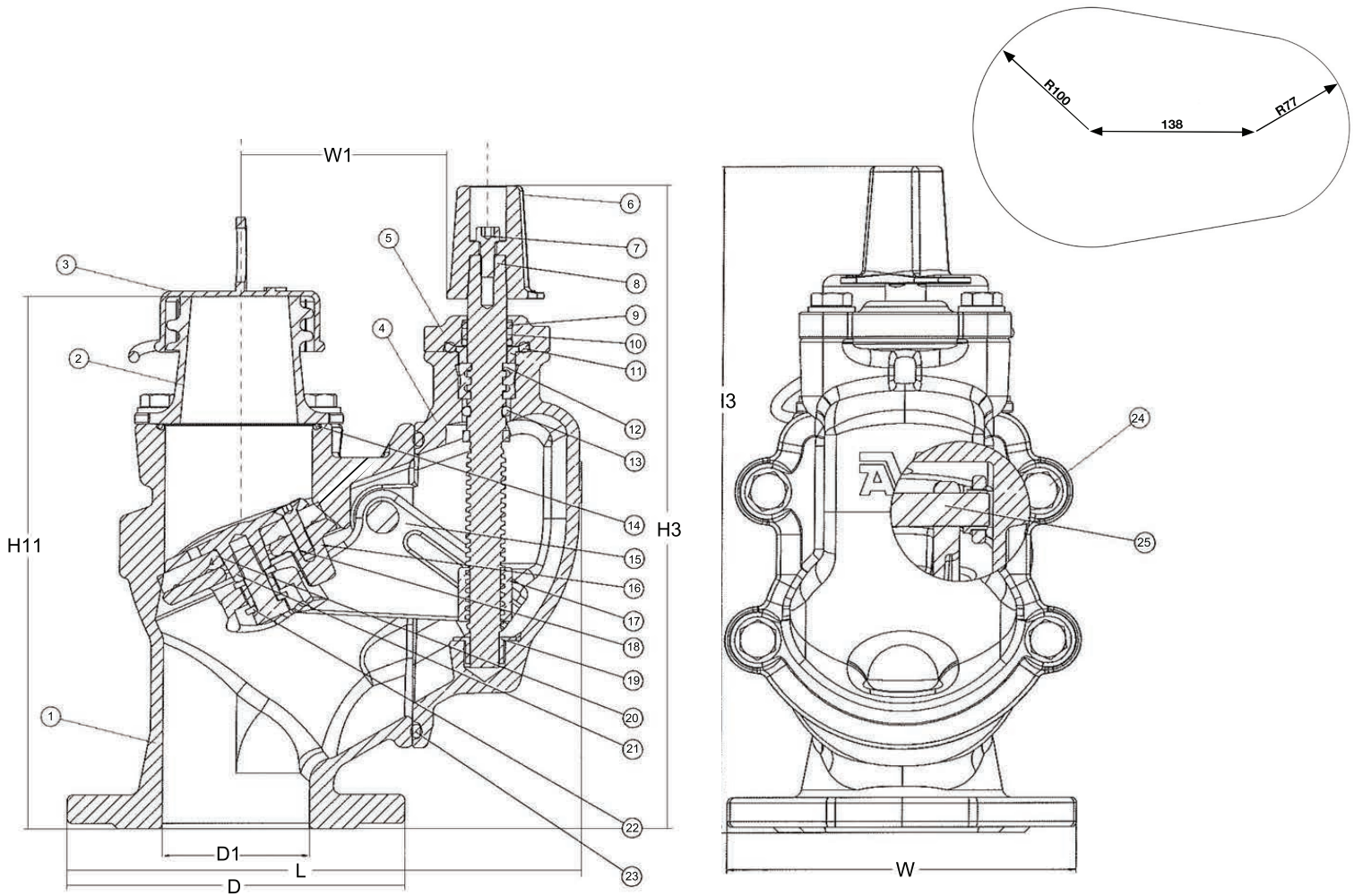
### Options:

#### Outlet options:

- Data logger connection point
- Stainless steel (standard) or Gunmetal to BS 750 round thread
- Instantaneous (Morris)
- Belfast
- London "V" thread
- Internal screwed Norwegian
- Bayonet (Dublin)
- Drain plug
- Hydrant security device



# CLEARWAY UNDERGROUND HYDRANT, PN16, CTC



## Component list:

1. Body	Ductile Iron EN-GJS-500-7	15. Hinge	Stainless Steel AISI 304
2. Outlet	Stainless Steel W1.4021	16. Disc Lower Part	Ductile Iron EN-GJS-500-7
3. Dust Cap	PE-HD	17. Nut	Brass CW724R
4. Bonnet	Ductile Iron EN-GJS-500-7	18. Bolt	Stainless Steel A2
5. Gland Flange	Ductile Iron, EN-GJS-500-7	19. Stem Bush	Brass CW626N
6. Stem Cap	Ductile Iron EN-GJS-500-7	20. Disc	PUR
7. Bolt Socket	Stainless Steel ISO3506: Grade A2	21. Disc Upper Part	Ductile Iron EN-GJS-500-7
8. Stem	Stainless Steel (W1.4104)	22. Washer	Stainless Steel Grade A2-70
9. O-Ring	NBR, EN681-1	23. Bonnet Gasket	EPDM
10. Polyamid Bush	PA6.6	24. Bolt	Stainless Steel ISO3506: Grade A2
11. O-Ring	NBR	25. Hinge Shaft	Stainless Steel EN10088-1:(W1.4404)
12. Thrust Collar	Brass EN12165: CW602N	Coating	Fusion bonded epoxy in line with WIS 04-52-01
13. O-Ring	EPDM		
14. O-Ring	NBR		

## Reference Numbers & Dimensions

	DN mm	D	L mm	H3 mm	W mm	DI mm	Weight kg	H11	W1	W5
	80	187	286	359	188	82	17	297	103	138
	80	187	286	359	188	82	17	297	103	138

This includes a 1/8 BSP drilled and tapped hole in the body for logger connection.