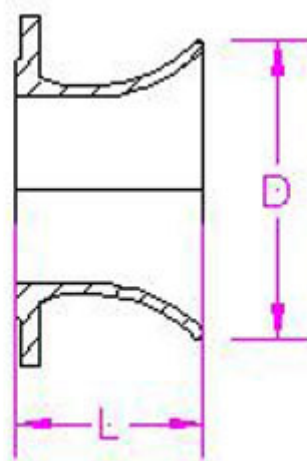


**Flanged Bellmouth
(Class K12)**



Nominal Bore mm	Dimensions		Weight Kgs.
	L mm	D mm	
80	135	160	5
100	140	185	6
150	155	245	10
200	170	310	15
250	190	370	21
300	210	435	29
350	225	495	39
400	245	560	51
450	260	620	63
500	280	685	83
600	300	810	122
700	340	945	154