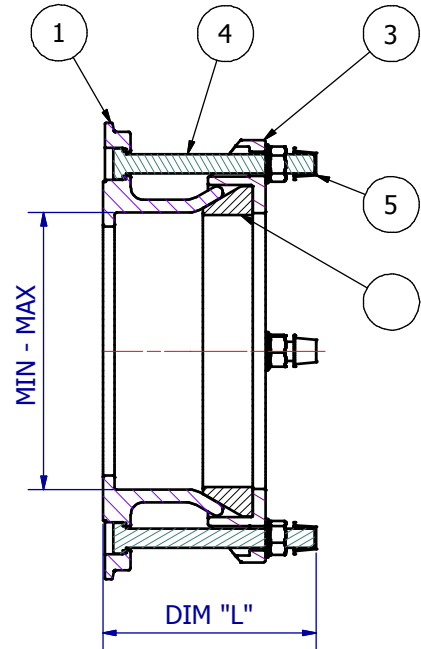
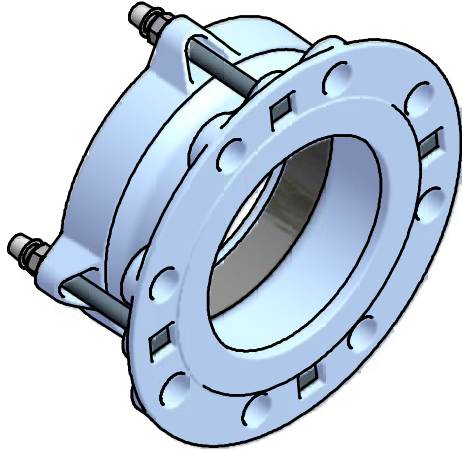


Standard Range Flange Adaptors



Suitable for tied restraint without modification

| MODEL No. | DN | DRILLING | DIMENSIONS | | DIM "L" | No. BOLTS & SIZE | WGT (kg) |
|-----------|-----|----------|------------|---------|---------|------------------|----------|
| | | | MIN O/D | MAX O/D | | | |
| SF-50-1 | 50 | PN10/16 | 60 | 66 | 125 | 2 x M12 | 3.5 |
| SF-50-1 | 80 | PN10/16 | 89 | 98 | 135 | 4 x M12 | 4.5 |
| SF-100-1 | 100 | PN10/16 | 108 | 118 | 135 | 4 x M12 | 5 |
| SF-150-1 | 150 | PN10/16 | 159 | 170 | 135 | 4 x M12 | 6.5 |
| SF-200-1 | 200 | PN16 | 219 | 225 | 135 | 6 x M12 | 11 |
| SF-250-1 | 250 | PN16 | 273 | 280 | 135 | 6 x M12 | 13 |
| SF-300-1 | 300 | PN16 | 315 | 326 | 135 | 6 x M12 | 15 |

Material & Coatings

| FLANGE ADAPTORS - Parts List | | | | |
|------------------------------|-----|--------------------|-----------------------|----------------|
| ITEM | QTY | DESCRIPTION | MATERIAL | SPECIFICATION |
| 1 | 1 | BODY CASTING | 420/12 CAST S.G. IRON | POWDER COATED |
| | 1 | GASKET | EPDM ELASTOMER | |
| 3 | 1 | END RING CASTING | 420/12 CAST S.G. IRON | POWDER COATED |
| 4 | 4 | M12 ADJUSTING BOLT | GRADE 8.8 STEEL | ZINC PLATED |
| 5 | 4 | THREAD CAP | NYLON MOULDING | NATURAL FINISH |
| 6 | 4 | HEXAGON NUT | ST. STEEL GRADE A4 | NATURAL FINISH |
| 7 | 4 | WASHER | ST. STEEL GRADE A4 | NATURAL FINISH |