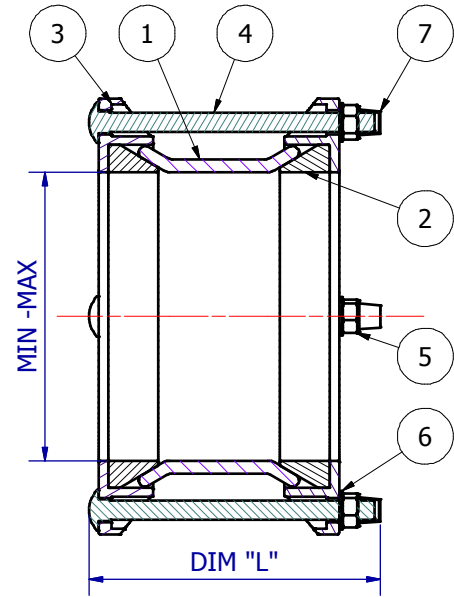
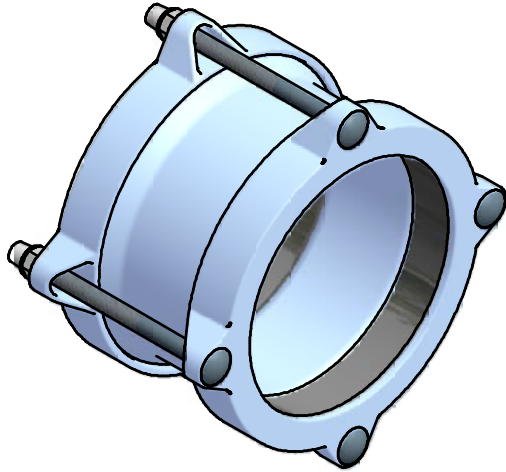


## Hydro 2 S - Range Couplings



Suitable for tied restraint without modification

HYDRO S Range - DIMENSIONS						
MODEL No.	DN	MIN O/D	MAX O/D	DIM "L"	No BOLTS & SIZE	WGT (kg)
SC-50-1	50	60	66	115	2 x M12	3
SC-80-1	80	89	98	200	4 x M12	5
SC-100-1	100	108	118	200	4 x M12	6
SC-150-1	150	159	170	200	4 x M12	7
SC-200-1	200	219	225	200	6 x M12	12
SC-250-1	250	273	280	200	6 x M12	14
SC-300-1	300	315	326	200	6 x M12	16



### Material & Coatings

HYDRO S Range COUPLINGS - Parts List					
ITEM	QTY	DESCRIPTION	MATERIAL	SPECIFICATION	
1	1	BODY CASTING	420/12 CAST S.G. IRON	WRAS APPROVED POWDER COATED	
2	2	GASKET	EPDM ELASTOMER	WRAS APPROVED MATERIAL	
3	2	END RING CASTING	420/12 CAST S.G. IRON	WRAS APPROVED POWDER COATED	
4	4	M12 ADJUSTING BOLT	GRADE 8.8 STEEL	ZINC PLATED & BLACK PLASCOAT 80 MIC	
5	4	HEXAGON NUT	ST. STEEL GRADE A4	NATURAL FINISH	
6	4	WASHER	ST. STEEL GRADE A4	NATURAL FINISH	
7	4	THREAD CAP	NYLON MOULDING	NATURAL FINISH	